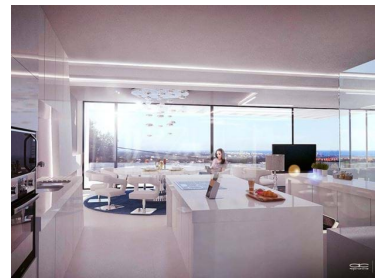




Boliqueime - Land



N/A
CLASSE
ENERGÉTICA

 4900

Land Area (m²)

925 000 €

(EUR €)

Sea View plot with approved project - Boliqueime

An approved project for the construction of contemporary, high quality apartments with sea views, located on the edge of the popular village of Boliqueime.

The project includes a total of between 13 and 15 apartments (depending on the desired layout), some of which are true, private penthouse apartments with private rooftop pools and terraces. All of the apartments are south facing, with excellent views of the coast. The apartment building will include secure underground parking, landscaped gardens and a swimming pool within the grounds.

T +351 308 801 913 · T +351 961 620 750 · E office@azul-properties.com
Loja E, Edifício Fonte Nova, EN 125 8100-069 Fonte de Boliqueime
AMI 5604