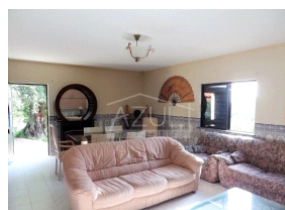
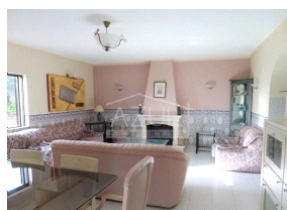
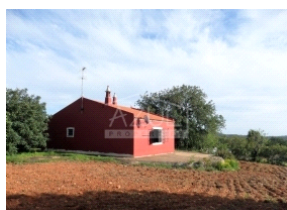
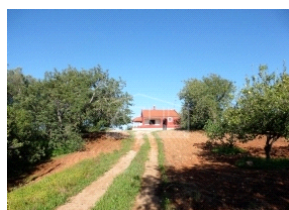


1 Bed Villa for expansion - near Loulé



Ref: 1009-1933 - Area: Loulé - Bedrooms: 1 - Price: € 276,000

Bathrooms: 1 - Built area: 88m² - Land area: 2760m²

A single storey house, situated on the highest part of the plot, with clear views to the coast, ideal as a basis to extend and improve the house.

Features

- Terrace
- Possibility of extension up to 300 m²
- Borehole and Cisterna
- South Facing
- Many typical trees
- House centered on the plot
- Energy rating: F
- Year built 2005
- Covered terraces